

AUTOBUS RENAULT TN6C 1934 " Paris Autobus "



The Renault TN is a range of buses produced from 1931 until 1971 described by Le Monde as a symbol of a Paris era [Wikipedia].

Around 1971 the buses were slowly phased out, and it was a sad day for tourists and students alike, when the streets of Paris no longer saw these "cult" buses.

Solido produced a die-cast model, made of metal and plastic and was to a scale of 1:50 , and this paper model is based on the *Solido* model.

To the model: also 1:50, and the folds are the usual dash-dash-dash symbols for 'mountain' folds, and dash-dot-dash for the 'valley' folds. Take special care with the front of the bus, otherwise you will get a twisted model. The top of the roof is slightly wider than the bottom, so that a slight curvature results

Use 160g card.

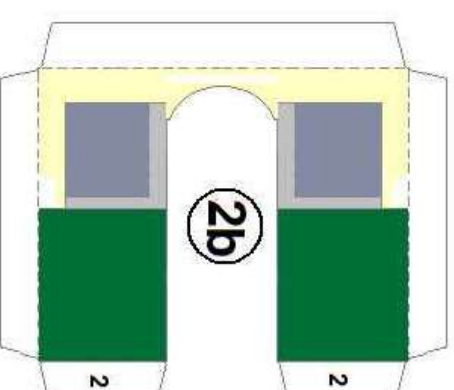
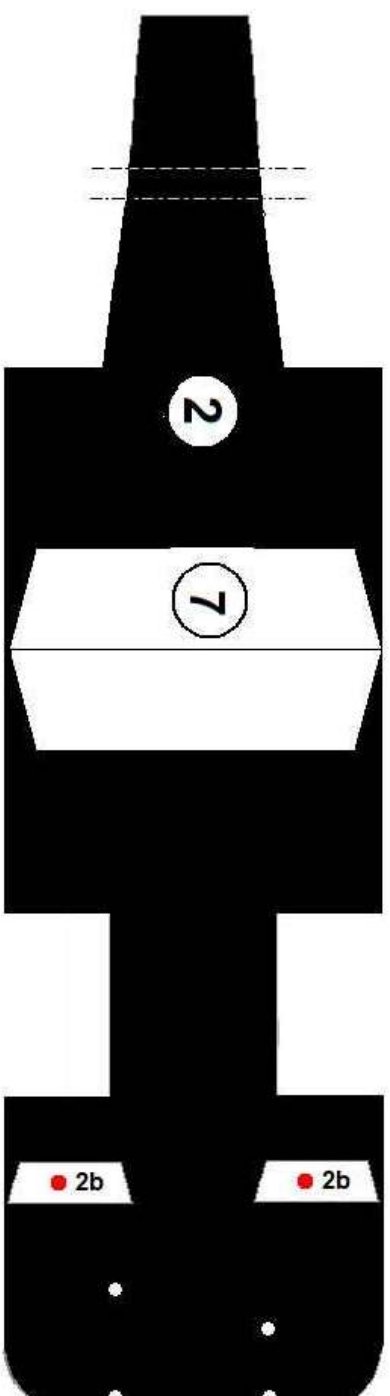
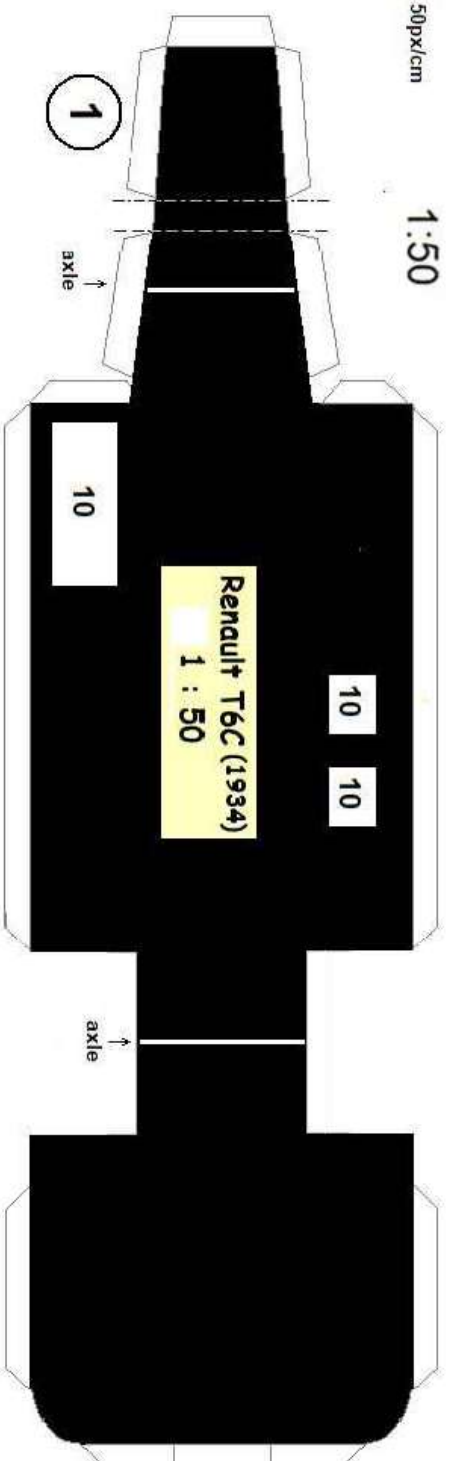
Assembly

- 1 Cut out parts **1** and **2** , then fold all tabs of part **1**.
- 2 Punch or cut the 4 green dots on the rear of part **2**, before gluing the latter inside part **1** .
- 3 Glue parts **3** and **4** : after folding all tabs, onto the frame **1 / 2** . Add **3a**

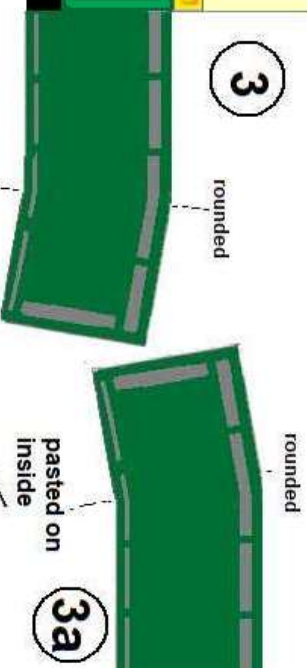
and **4a** to **3** and **4** respectively,.

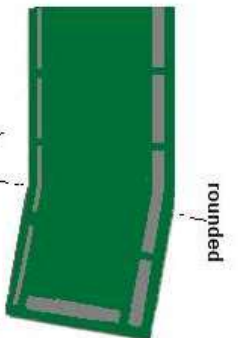
- 4 Make part **2b** 2x thick, before cutting out, leaving the 3 tabs free, and only gluing the 2 base tabs.
Add/glue **2b** onto **2** .
- 5 Fold 4 tabs of **7**, cut out green glue back to front and glue in place within the body of the bus (position marked).
- 6 Glue **11** in place.
- 7 Glue radiator **6a** to **6** . In **6** , cut the 2 slits for the mudguards **9** .
Close/glue the 2 x mudguards, and round them to the correct form, before inserting into **6** (glue **9**). When the glue is dry, cut off the light green areas, Add part **6b** .Glue the assembly to the sides **3** and **4** .
- 8 Cut out roof **5** , punch or cut the 4 green dots, close/glue (Note: to get a better form of the curvature, you can use the roof spars **5b** glued between the upper and lower parts of the roof.
Add the 2 side strips **5a**. Set aside. 4 blackened cocktail sticks should be used for the vertical hand rails. Assemble **5c** and **5d** .and glue on to the roof.
- 9 Cut out the 6 sets of strips **8** , and roll/glue the wheels. Glue the 4 rear wheels together to form 2x sets of 2 each. Blacken the sides with a felt pen. Add the wheel rim covers **8a** .
Assemble the front and rear wheels by gluing onto the ends of 2 blackened cocktail sticks (see diagram). Glue in place underneath the chassis.
Tip: If you wish the wheels to turn, glue a blackened tube around the axle but NOT glued to the axle! Glue onto the chassis.
- 10 Add the boxes **10** beneath the chassis, and **Z** under the front of the roof to keep the right-angled form of the windows unit **11** .
- 11 Glue on the roof **5** , then the side strips **5a** .
- 12 Finally, add the side-mirrors **14** and headlamps **15** .

---oooOooo---



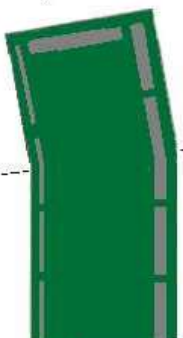
Glue underneath 2b to strengthen then cut out the doorway





rounded

4a



rounded

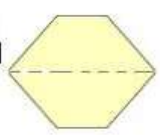
4



pasted on
inside

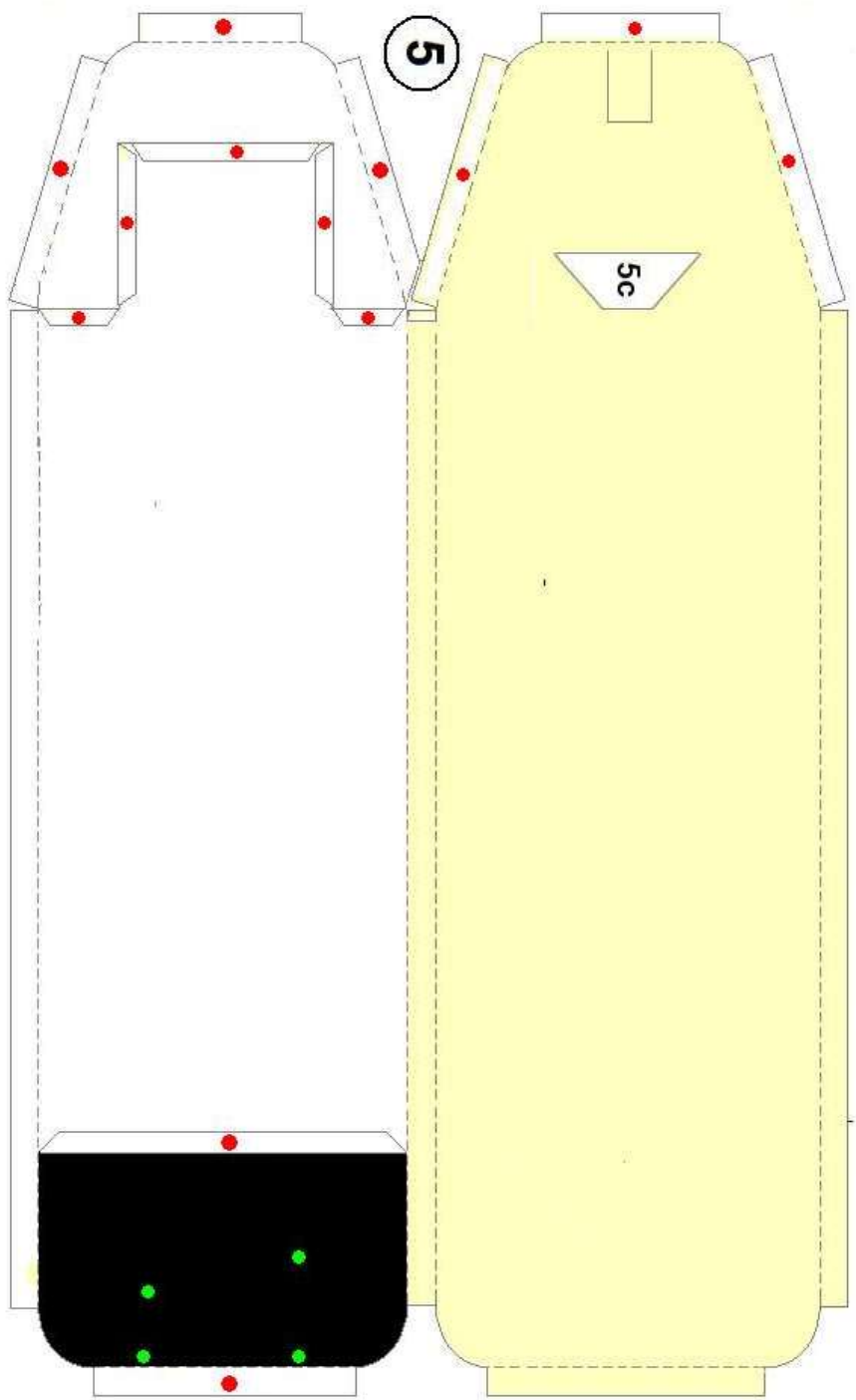


5d

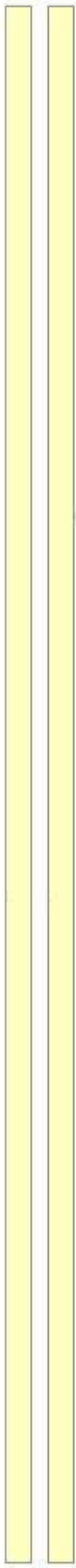
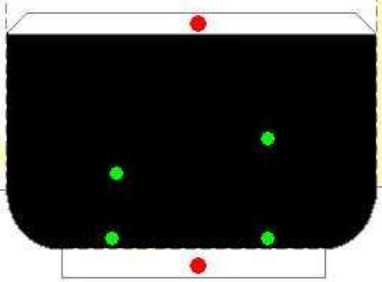


5c

5



5c



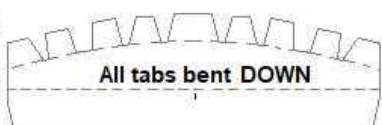
Sheet 2

PartsBus

<http://bobscardmodels.altervista.org>

5a

Stability spars
for Roof



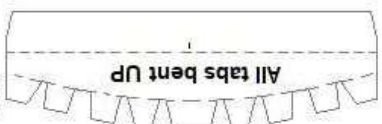
All tabs bent DOWN



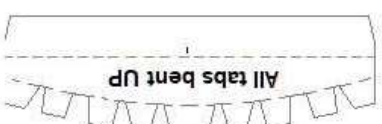
All tabs bent DOWN



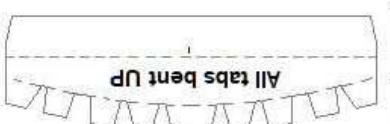
All tabs bent DOWN



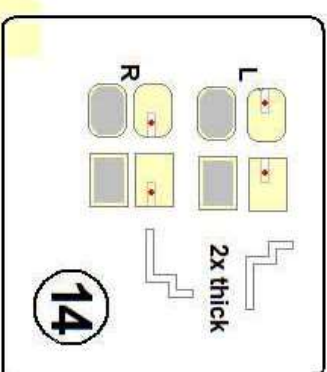
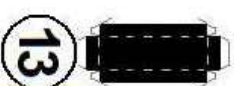
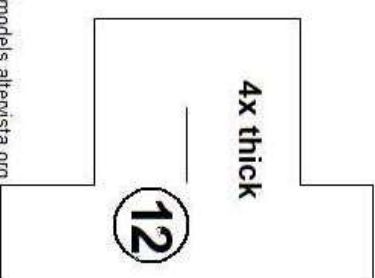
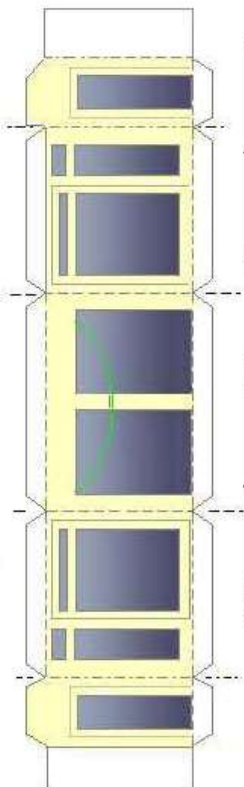
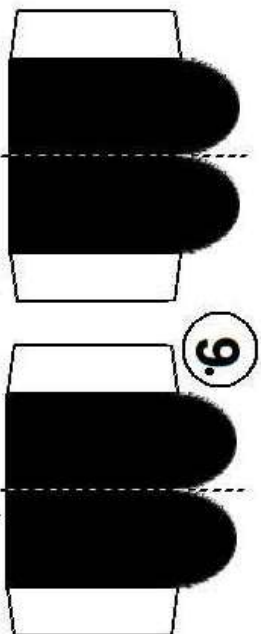
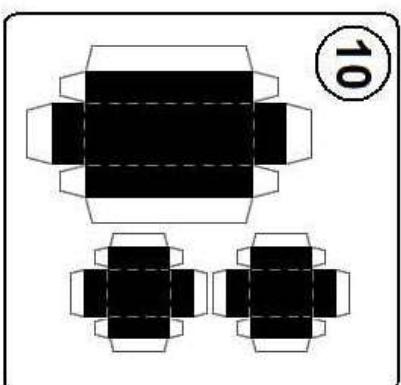
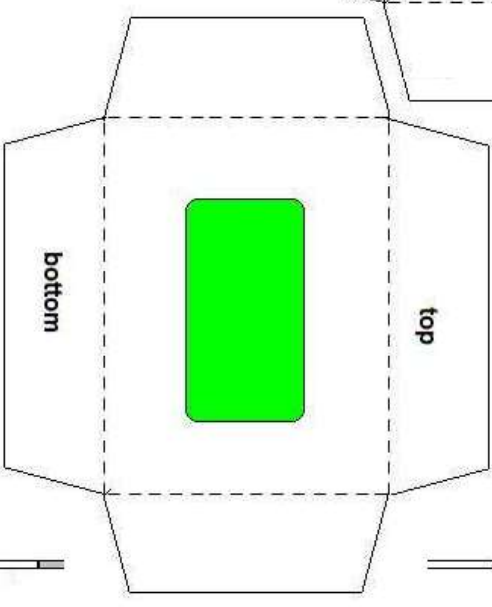
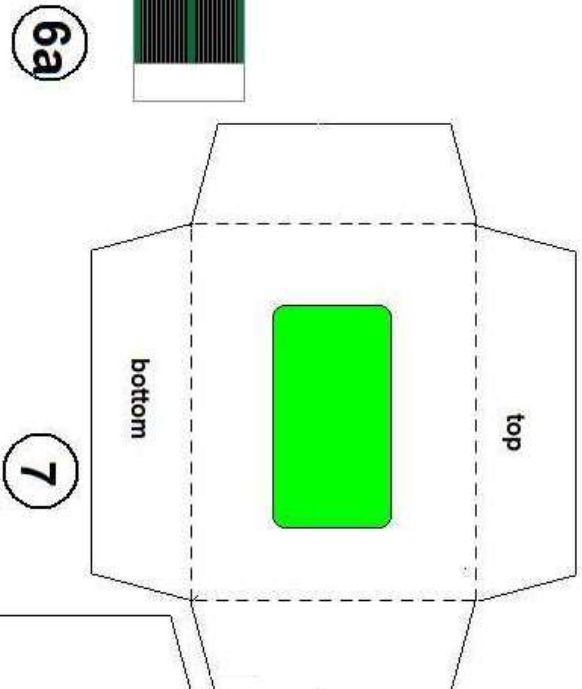
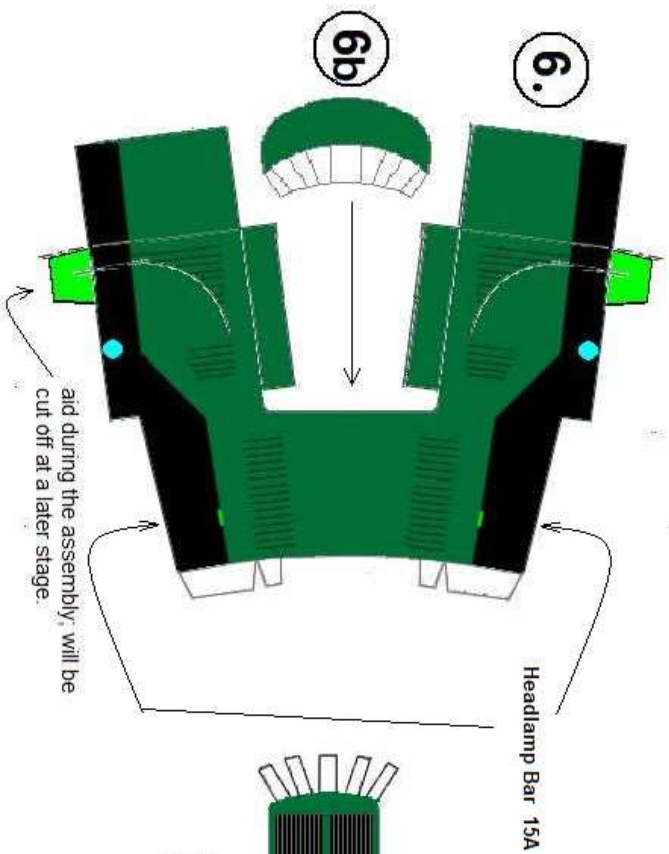
All tabs bent UP

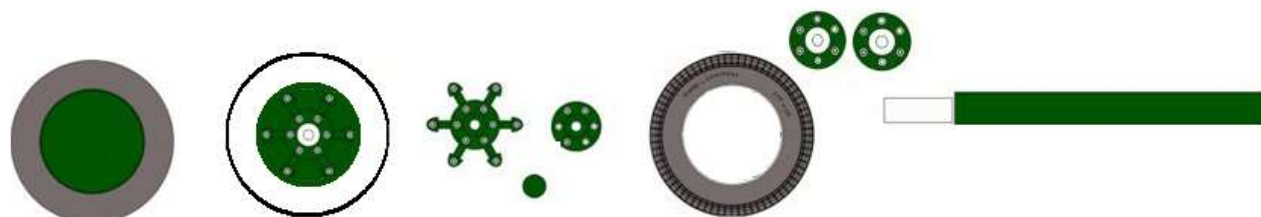
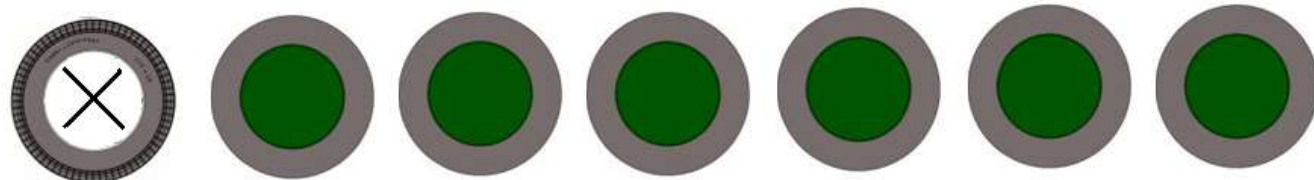


All tabs bent UP

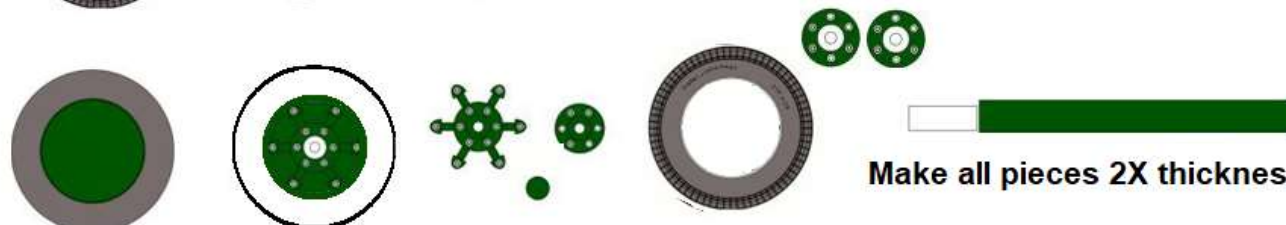
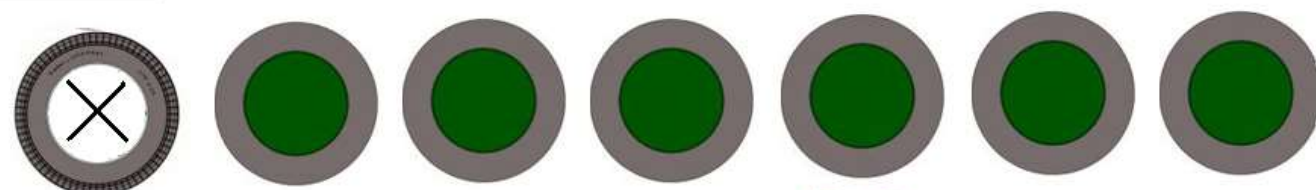


All tabs bent UP

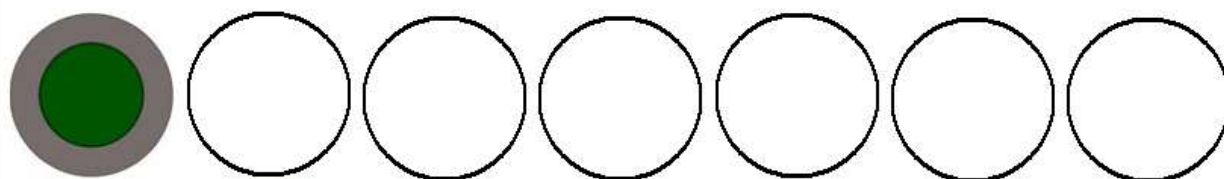




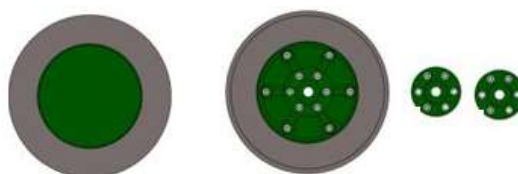
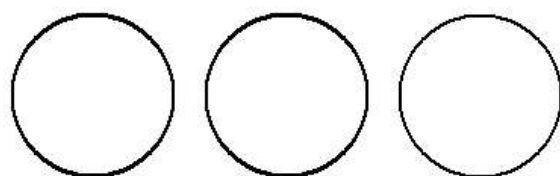
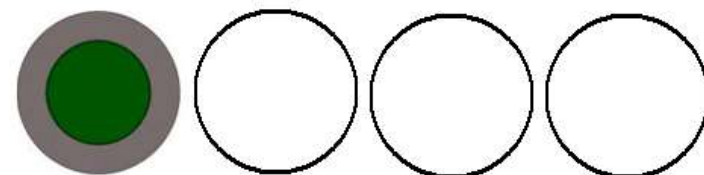
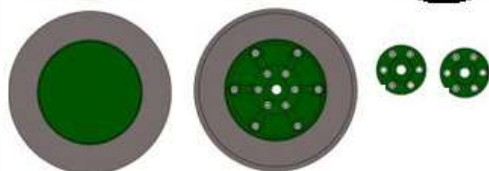
2 outer rear wheels



Make all pieces 2X thickness



2 inner rear wheels



Make all pieces 2X thickness

